



INNOVATION OF THE YEAR

GRAND AWARDS

INNOVATORS

MULTIMEDIA

CATEGORIES



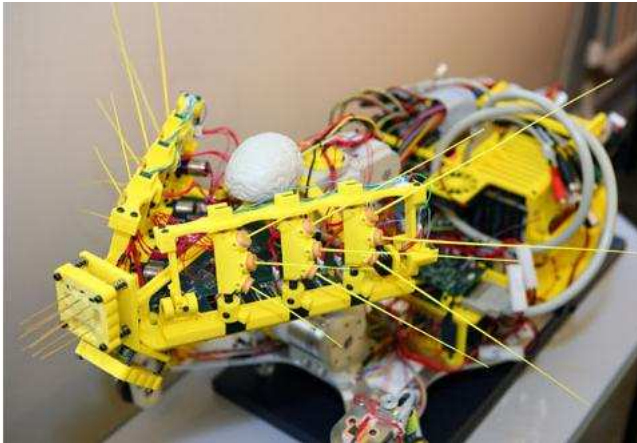
SECURITY

Scratchbot

Ratlike whiskers give robots night vision

8 Comments

Security 3 of 11

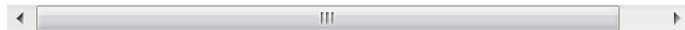


Gallery: SCRATCHbot

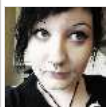
Borrowing a trick from the lowly rat, the SCRATCHbot uses whiskers instead of cameras to see in the dark.

Researchers at the University of Bristol in England hope to deploy the poodle-size 'bot in search-and-rescue missions where vision is impaired, like in mines or smoky rooms. Its 18 whiskers move back and forth five times per second. When a whisker bends, a sensor on its shaft signals software to orient the 'bot toward the object. Whiskers close to an object move less, while those farther away make wide, sweeping motions to establish the object's exact edges.

brl.ac.uk



8 COMMENTS



11/28/09 at 4:17 pm
I want one!

Eviscerated

[Link to this comment](#)



11/29/09 at 2:10 pm
meh too! but it has to be blue.....and have a cup holder.

Dane619

[Link to this comment](#)

kamloopstrout

11/29/09 at 8:06 pm
Is this the next generation for roomba warfare? If it is, im out of here!

[Link to this comment](#)



javor jav

12/01/09 at 12:25 pm
this article has already been posted, three times.

[Link to this comment](#)

Kim - Talkingde...

12/01/09 at 1:35 pm
Its interesting for the first 5 minutes what does it do to hold your interest after that ?

[Link to this comment](#)

alouisos

12/01/09 at 5:50 pm
This is a nice piece of robotics engineering if the autonomy is enough to keep it running in terms of energy and self guidance. (harsh environments are difficult for communications).

Nevertheless, I believe that the future of robotics in critical situations is in swarm robotics, that is the use of multiple mini-to micro electronic devices working in an orchestrated fashion.

[Link to this comment](#)

somerandompers

12/11/09 at 5:26 pm
I think you are going in the right direction with the swarming robot, but I believe that these whiskers are enough to fully operate a search and rescue mission.
How is the robot supposed to tell if that is a wall or a survivor that needs rescuing?

[Link to this comment](#)

somerandompers

12/12/09 at 11:13 am
sorry, corrections: I don't believe whiskers are enough to fully operate... : /

[Link to this comment](#)

To comment, please [Login](#).

Copyright © 2012 Popular Science
A Bonnier Corporation Company. All rights reserved. Reproduction in whole or in part without permission is prohibited.

